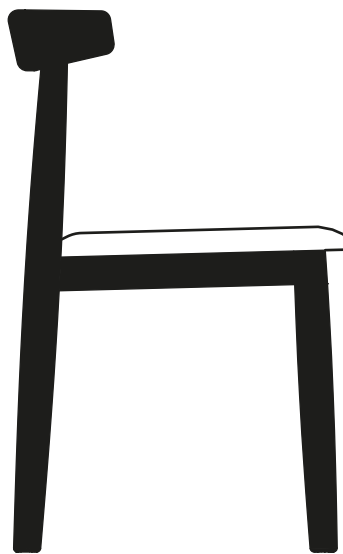


# CLARETTA BOLD

by Florian Schmid



Claretta è diventata adulta e ha preso inevitabilmente qualche chilo. Niente di preoccupante, non fate quella faccia strana se si chiama Bold. È grossa, formosa e a noi piace così. L'espressione esile degli anni passati, che faceva tenerezza, è diventata scultorea e decisa. Ha la voce alta, da protagonista e forse è un po' egocentrica. Noi però preferiamo definirla carismatica. Si veste anche con due nuovi tessuti, il velluto per le situazioni eleganti e lo "sponge" quando vuole distinguersi dalle altre. Si inserisce perfettamente nei tavoli ed è impilabile.

Claretta is all grown-up, and has inevitably gained a few kilos. Nothing to worry about, don't pull that face if we call it Bold. It is big, voluptuous, and we like it that way. The slender expression of past years, which we viewed with tenderness, has now grown more sculptural and decisive. It has the loud voice of a protagonist, and is perhaps even a little self-centred. But we prefer to call it charismatic. It is dressed in new fabrics: velvet for elegant situations and "sponge" when it wants to stand out from the crowd. It fits beautifully with the tables, and is stackable.

## DIMENSIONI | DIMENSIONS

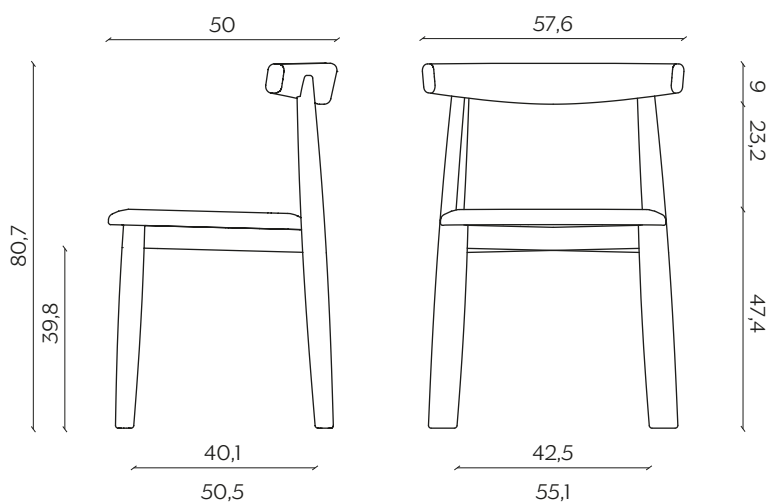
lunghezza | width: 57,6 cm

larghezza | depth: 50 cm

altezza | height: 80,7 cm

altezza del sedile | seat height: 47,4 cm

impilabilità | stackability: sì (X3) | yes (X3)



## AMBIENTE | ENVIRONMENT

interno | indoor

## DOWNLOAD | DOWNLOADS

la guida Cura e Manutenzione è disponibile su [miniforms.com](https://miniforms.com)  
Care and Maintenance guide is available at [miniforms.com](https://miniforms.com)

file 2D, 3D e fotografie sono disponibili su [miniforms.com](https://miniforms.com)  
2D, 3D files and hi-res images are available at [miniforms.com](https://miniforms.com)

## FINITURE | FINISHES

### TESSUTI | FABRICS

#### Ecopelle | Ecoleather



Bianco  
White



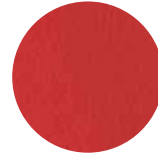
Avorio  
Ivory



Grigio Scuro  
Dark Grey



Nero  
Black



Rosso Scuro  
Dark Red



Testa di Moro  
Dark Brown

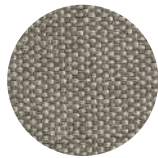


Tortora  
Dove Gray

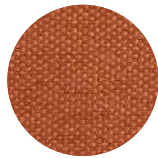
#### Tramè



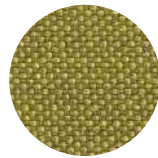
Beige  
Beige



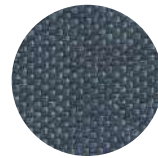
Tortora  
Dove Gray



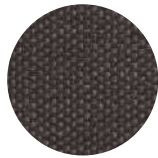
Arancio  
Orange



Pistacchio  
Pistachio



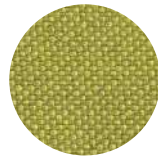
Blu Elettrico  
Electric Blue



Antracite  
Anthracite

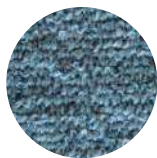


Nero  
Black



Mela  
Apple

#### Shock



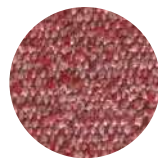
Oltremare  
Ultramarine Blue



Nocciola  
Nut Brown



Grigio Seta  
Silk Grey

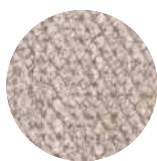


Corallo  
Coral



Pietra  
Stone Grey

### Tanimo



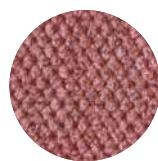
Tortora  
Dove Grey



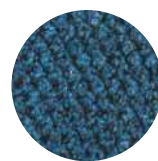
Nocciola  
Nut Brown



Mattone  
Brick Red

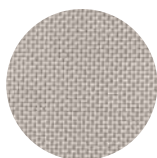


Millennial Pink  
Millennial Pink

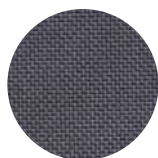


Oltremare  
Ultramarine Blue

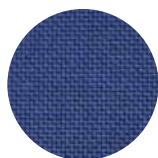
### Loop



Tortora  
Dove Grey



Grigio Piombo  
Lead Gray



Blu Notte  
Midnight Blue



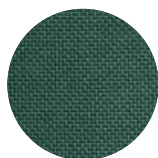
Giallo  
Yellow



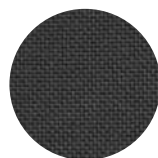
Rosso Bordeaux  
Red Bordeaux



Rosso  
Red



Verde  
Green

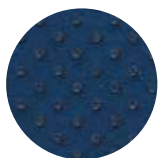


Nero  
Black

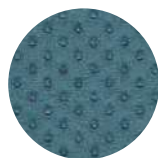
### Sponge



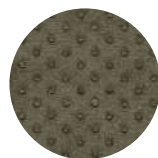
Grigio Chiaro  
Light Grey



Blu  
Blue



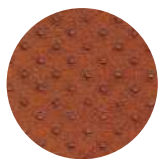
Azzurro  
Light Blue



Verde  
Green



Grigio Scuro  
Dark Gray



Arancio  
Orange

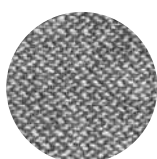


Beige  
Beige

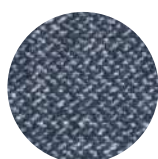


Giallo  
Yellow

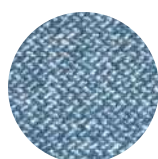
### Twins



Cenere  
Ash



Oltremare  
Ultramarine Blue



Jeans  
Jeans

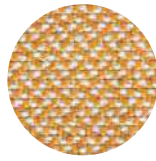


Polvere  
Dust Gray

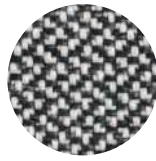


Tortora  
Dove Grey

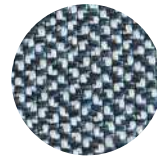
### Etna



Miele  
Honey



Sale e Pepe  
Salt and Pepper



Blu Notte  
Midnight Blue

### Modi



Mandorla  
Almond



Sale e Pepe  
Salt and Pepper



Pietra  
Stone Grey



Blu Notte  
Midnight Blue



Zafferano  
Saffron Yellow



Ciliegia  
Cherry

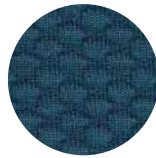
### Millennial Visual



315



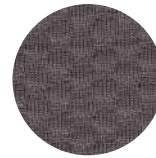
327



328



313



319

### Econabuk



Nociola  
Light Brown



Marrone  
Brown



Seppia  
Sepia



Grigio  
Grey



Antracite  
Anthracite

### Bubble



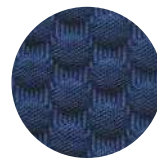
Nero  
Black



Grigio  
Grey



Azzurro  
Light Blue

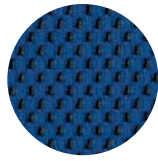


Blu Intenso  
Intense Blue

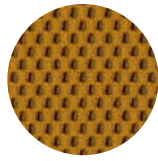


Rosa  
Pink

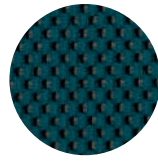
### Mesh



Blu Neon  
Neon Blue

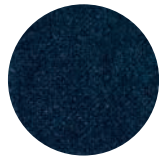


Miele  
Honey

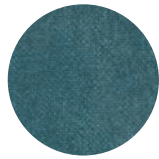


Foglia di Tè  
Teal

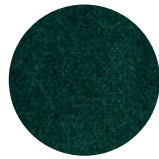
### Shelter Velvet



Blu Notte  
Midnight Blue



Foglia di Tè  
Teal



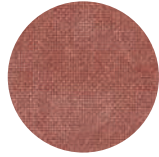
Verde Foresta  
Forest Green



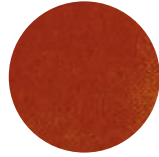
Muschio  
Musk



Beige  
Beige



Rosa Antico  
Antique Pink



Terra di Siena  
Burnt Siena



Cammello  
Camel

### Rakam



Bacca  
Berry

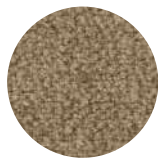
### Barnum



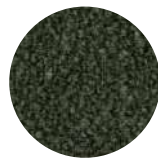
Crema  
Cream



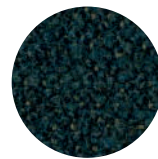
Mandorla  
Almond



Sabbia  
Sand

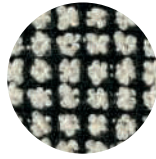


Foresta  
Forest



Foglia di Tè  
Teal

### Brionne



385.040

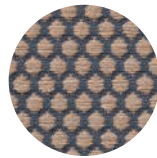
### Vescom Rolla



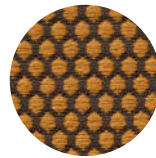
Blu Pavone  
Peacock



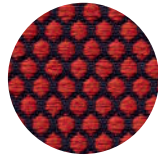
Blu Notte  
Midnight Blue



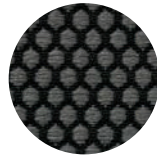
Latte  
Steamed Milk



Mostarda  
Mustard



Ciliegia  
Cherry

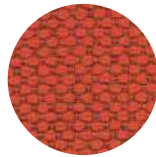


Grafite  
Graphite

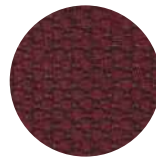
### Kvadrat - Maharam Merit



035



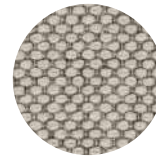
037



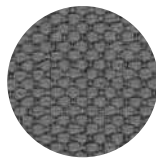
039



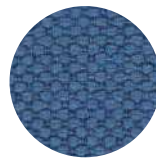
033



023



003



008



025

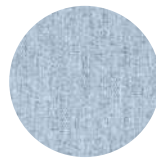
### Kvadrat - Melange Nap



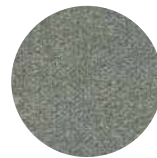
461



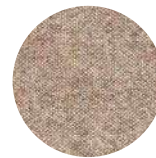
321



711



951

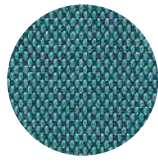


221

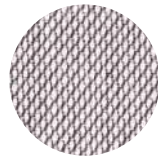
### Kvadrat - Steelcut Trio 3



806



983



616



515



526

### Dedar - Alumnus



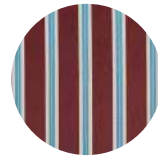
Celadon



Sorbet  
Pastèque



Tomato Soup



Bordeaux



Navy

### STRUTTURA | STRUCTURE

#### Legno | Wood



Frassino  
Ash



Frassino Nero  
Black Ash



Frassino Tinto  
Rovere  
Ash Stained Oak



Frassino Tinto  
Noce  
Ash Stained  
Walnut